

Ohio Shoal Race
25 July 2020
SAILING INSTRUCTIONS
Issued: 15 July 2020

1.0 Rules:

The race will be governed by *The Racing Rules of Sailing 2017 – 2020* except as noted herein.

2.0 Entries: This race is open to all monohull yachts with a current PHRF rating. If a boat does not have a rating, the Race Chairman will assign a provisional rating.

2.1 Classes: Classes will be determined by the number and types of boats registering. There will be a multi-hull class if 2 or more multi-hull boats enter.

3.0 Communications:

There will not be a Skipper's Meeting. The classes, starting times, course and course direction will be decided at 8 pm Friday evening. The information will be emailed to all registrants. After Friday evening, any last-minute changes or information will be emailed, texted or broadcast on VHF.

VHF Communications Process: At all times during the time to get to the starting line and during the race, a VHF radio should be on channel 16. If the Race Chairman needs to communicate to a specific boat, he will hail that boat and switch to channel 72 for the communications. If the Race Chairman needs to communicate to all skippers, he will announce three times on channel 16 for "all Ohio Shoal Race skippers to switch to channel 72" and the information will be broadcast on channel 72. It is not necessary for competitors to acknowledge, simply switch to channel 72. For boat-to-boat communications hail on channel 16 and switch to channel 72.

4.0 Starting Time: The base starting time is 1000 Saturday morning. Specific boat starting times will be communicated at 2000 Friday evening via email.

5.0 Races: There will be one race.

6.0 Courses:

There are two courses, Ohio Shoal and Virtual Mark. Each course can be run clockwise or counterclockwise depending on the wind. The marks of both courses, including their latitude/longitude are identified on pages 3 and 4 of these Instructions.

7.0 Starting:

The starting line is an imaginary line 100 feet long from the Start Mark perpendicular to the course to the next mark. Boats are required to announce that they have started on VHF radio

within 5 minutes after their start. Broadcast a message "(boat name) has started" twice on channel 16.

The following procedure replaces rule 26:

The start will be a reverse handicap start with boats starting at times based on their rating and the rated course length. The starting times for all competitors will be distributed to all registrants via email on Friday evening at 2000.

8.0 Finishing:

Boats are required to record their finish time, hour/minutes/seconds. Upon finishing boats are required to announce that they have finished on VHF radio channel 16 as soon as conveniently possible.

9.0 Time Limit: There is a time limit of 2400 Saturday.

10.0 Withdrawing from the Race:

A boat that withdraws before the end of racing shall call the Race Chairman, S/V Antares, on VHF radio channel 16 as soon as conveniently possible. If Antares does not acknowledge the VHF call, call and leave a message on mobile phone 321-795-6803.

12.0 Safety Equipment: ISAF Offshore Special Regulations, Category 4 requirements apply.

13.0 Protests:

A red flag of at least 4" x 6" is required to be flown for any protest. Protests shall be reported to the Race Chairman, S/V Antares within 30 minutes after the incident via VHF radio. This adds to RRS 61.1. A written protest, using a US Sailing Protest Form, must be submitted to the Race Chairman within two hours after the time limit. US Sailing Protest Forms are available at:

http://www.sailing.org/raceofficials/eventorganizers/regatta_protest_forms

14.0 Scoring: Reverse handicap starting applies; scoring shall be based on the order of finish.

15.0 Trophies: Trophies will be awarded based on the numbers of boats participating.

Issued by:

Del Wiese – MYC Race Chairman
s/v Antares, Morgan 30/2
mobile 321-795-6803

Approved by:

Peter Fischel
MYC Director/Fleet

Ohio Shoal

Clockwise		nm	course	Lat/Lon
R8 (start)	Stb.			N28 23.858 W80 33.420
R2	Port	7.1	104 mag.	N28 22.826 W80 25.432
R8 Ohio Shoal	Stb.	15.7	020 mag.	N28 38.100 W80 21.034
Weather Buoy	Stb.	10.9	135 mag.	N28 30.480 W80 11.100
R2	Stb.	15.1	242 mag.	N28 22.826 W80 25.432
R8 (finish)	Port	7.1	284 mag.	N28 23.858 W80 33.420
rated length		55.9		

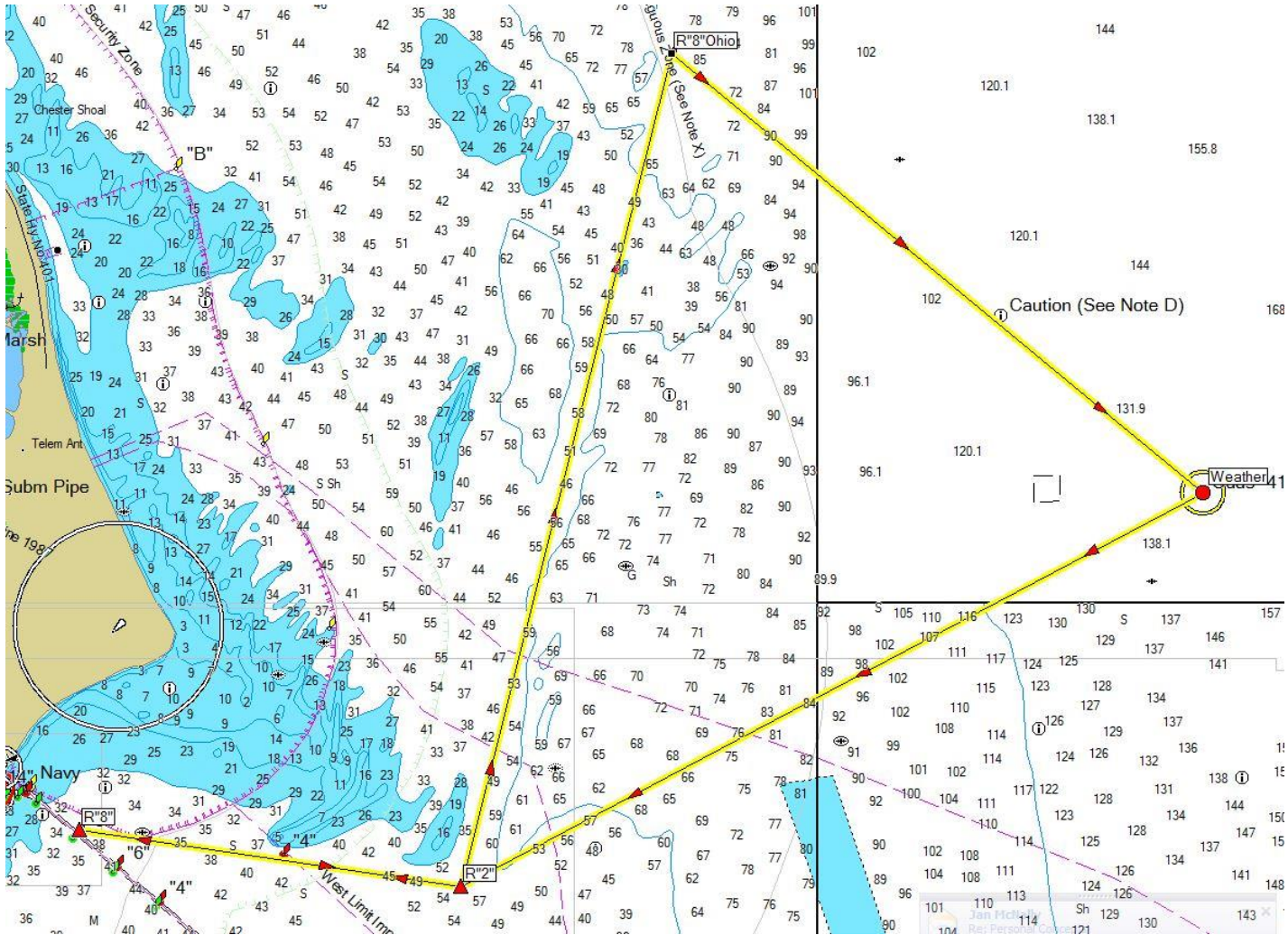
Counterclockwise		nm	course	Lat/Lon
R8 (start)	Stb.			N28 23.858 W80 33.420
R2	Port	7.1	104 mag.	N28 22.826 W80 25.432
Weather Buoy	Port	15.1	062 mag.	N28 30.480 W80 11.100
R8 Ohio Shoal	Port	10.9	315 mag.	N28 38.100 W80 21.034
R2	Stb.	15.7	200 mag.	N28 22.826 W80 25.432
R8 (finish)	Port	7.1	284 mag.	N28 23.858 W80 33.420
rated length		55.9		

Virtual Course

Clockwise		nm	course	Lat/Lon
G7 (start)	Stb.			N28 23.792 W80 33.502
B	Stb.	19.1	111 mag.	N28 18.755 W80 12.668
A	Stb.	17.2	219 mag.	N28 04.358 W80 23.428
G7 (finish)	Stb.	21.3	341 mag.	N28 23.792 W80 33.502
rated length		57.6		

Counterclockwise		nm	course	Lat/Lon
G7 (start)	Port			N28 23.792 W80 33.502
A	Port	21.3	161 mag.	N28 04.358 W80 23.428
B	Port	17.2	39 mag.	N28 18.755 W80 12.668
G7 (finish)	Port	19.1	291 mag.	N28 23.792 W80 33.502
rated length		57.6		

Ohio Shoal



Virtual Course

